

CE 474

Class 31

4 November 2015

Sales tax hike for local transportation projects has mixed results in 17 Utah counties

By Katie McKellar and Marjorie Cortez, Deseret News
Published: Tuesday, Nov. 3 2015 11:20 p.m. MST
Updated: 9 hours ago

Print | Font [+][-] | 13 Comments

Transportation leaders get three 'Go Hillsborough' options

Voters saying yes to Seattle's big ask for transportation

Originally published November 3, 2015 at 8:00 pm | Updated November 4, 2015 at 6:28 am

Proposition 1 in Seattle, to spend a record-high \$930 million over nine years on streets, safety, transit and pedestrian and bicycling routes, was winning handily in initial ballot counts Tuesday, throwing off criticism that the measure was too pricey.

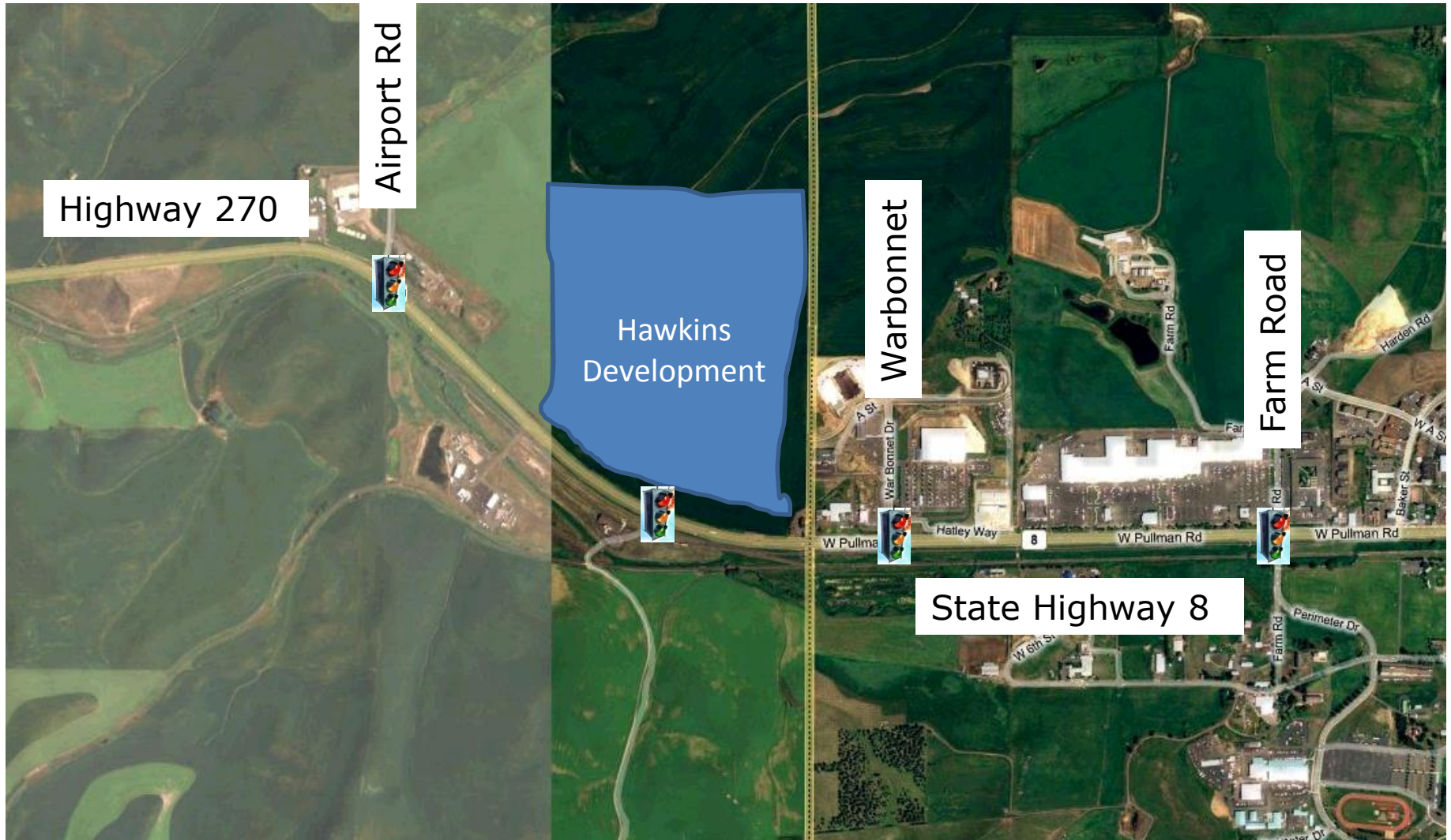
Voters show strong support for transportation

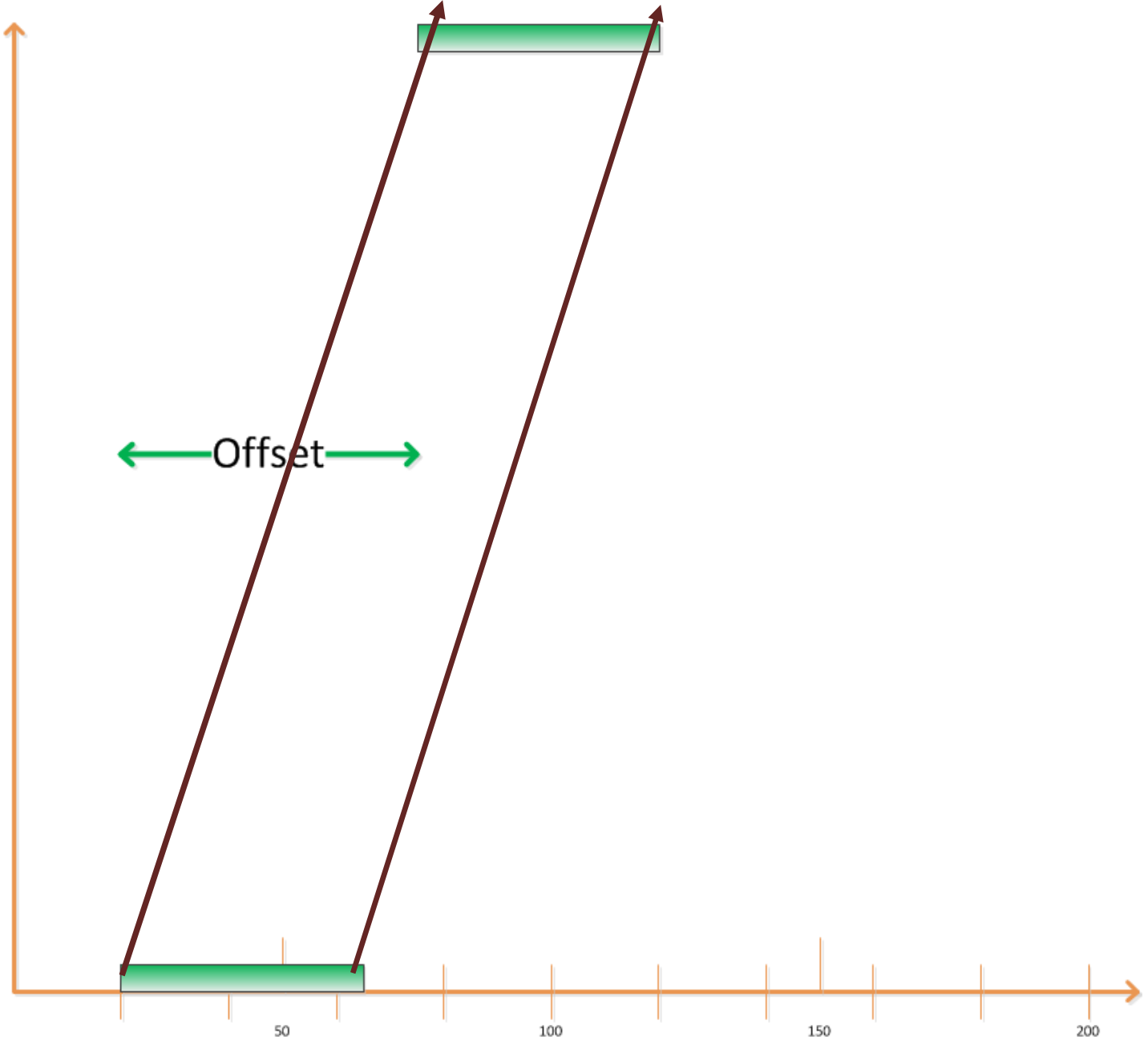
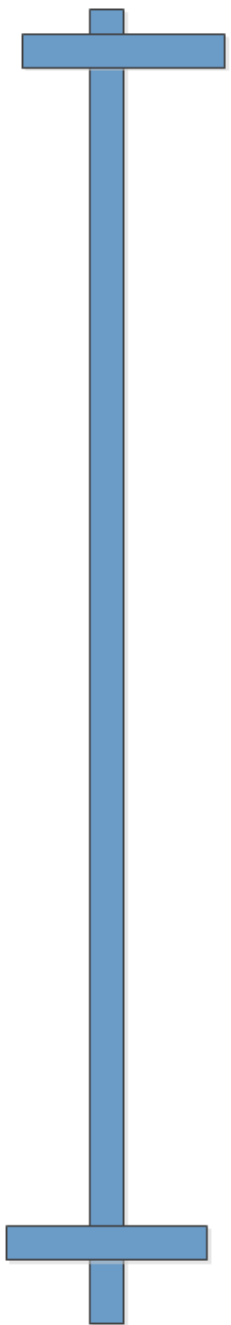
Express-News Editorial Board Updated 9:26 pm, Tuesday, November 3, 2015

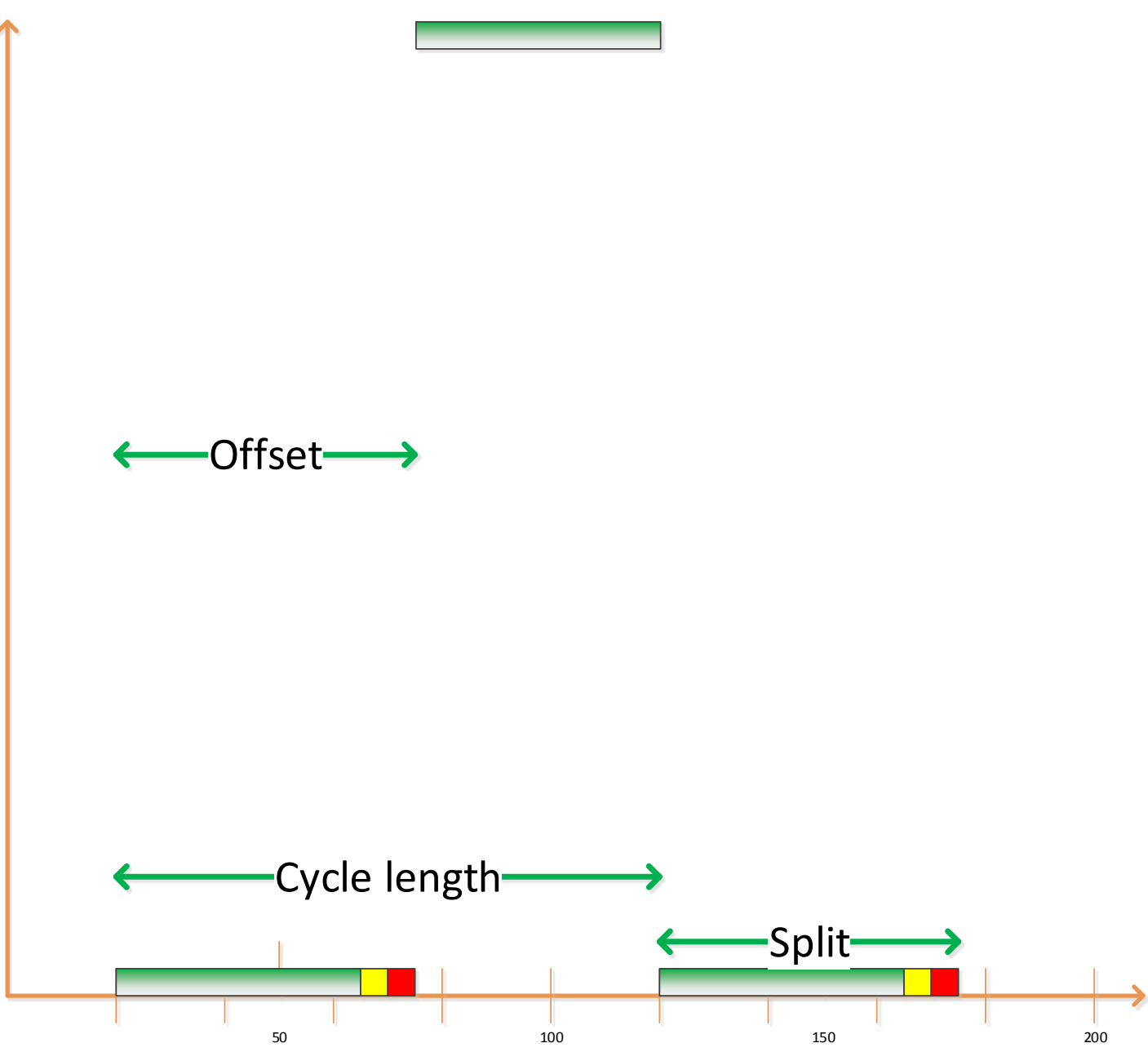
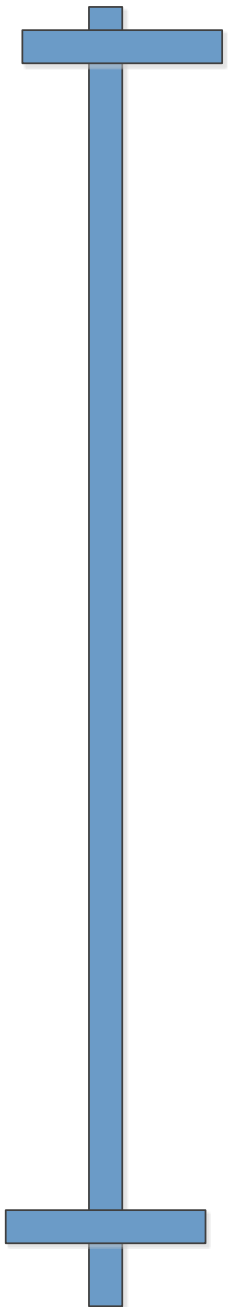
DOMESTIC POLICIES

House transportation bill impacts life of just about every American

SH 270-SH8









REGIONAL TRANSPORTATION COMMISSION

Planning • Streets and Highways • Public Transportation

Metropolitan Planning Organization

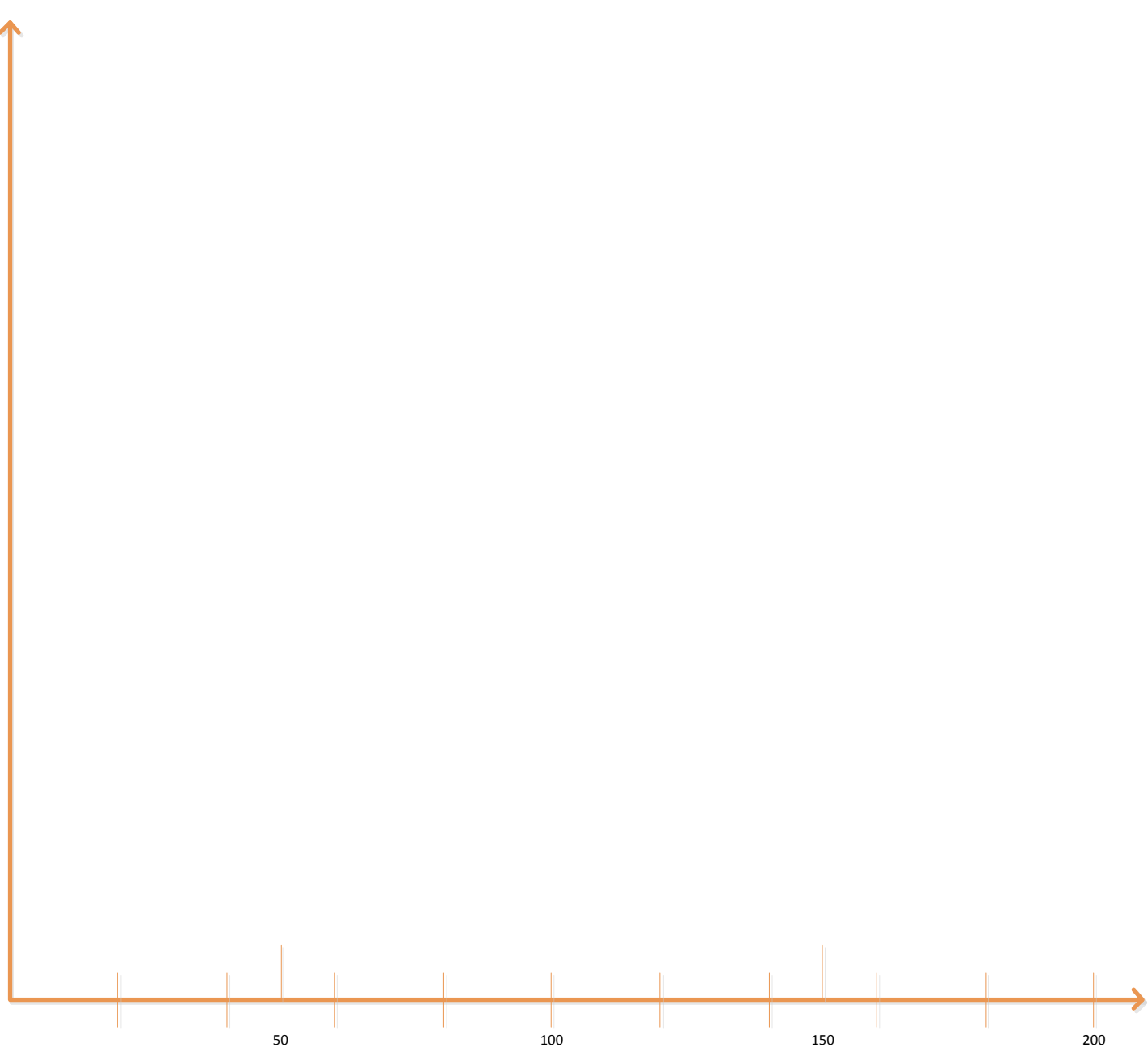
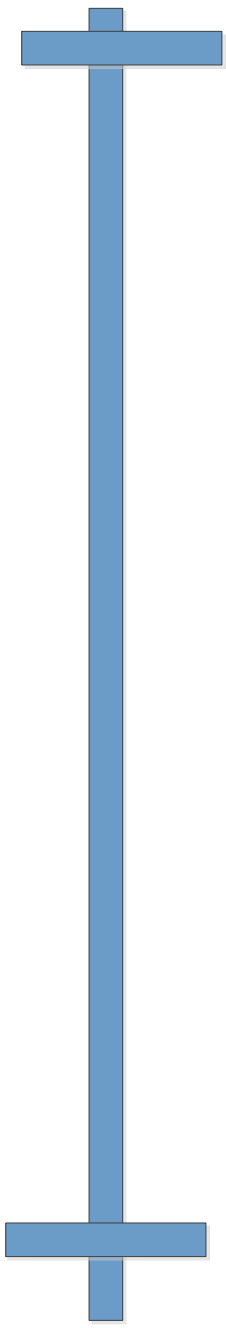


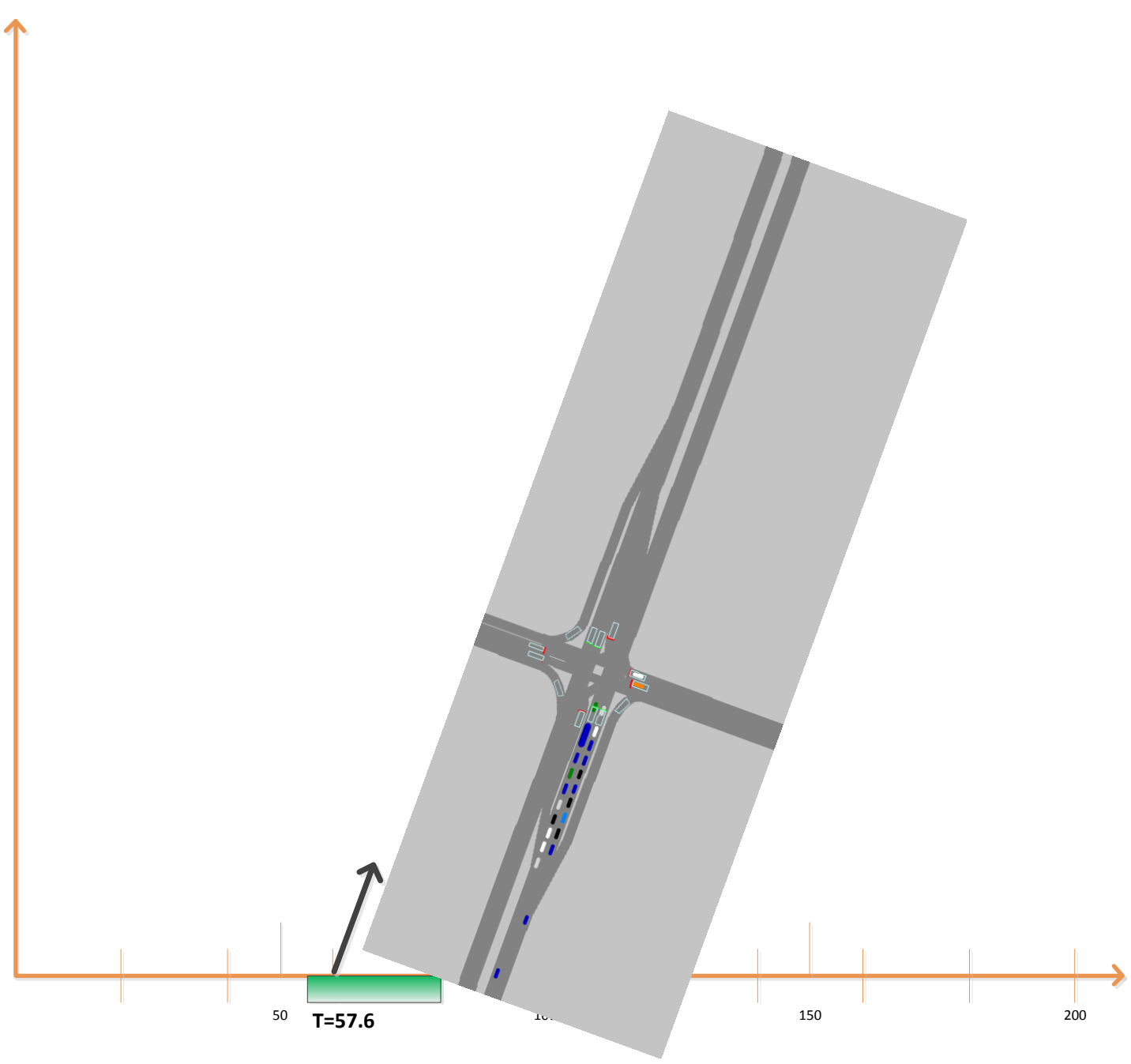
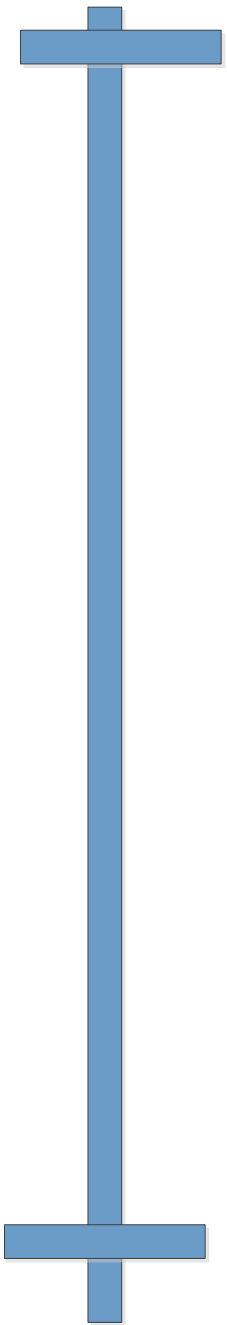
Virginia Street (Northbound) 4:15 PM Traffic Peak

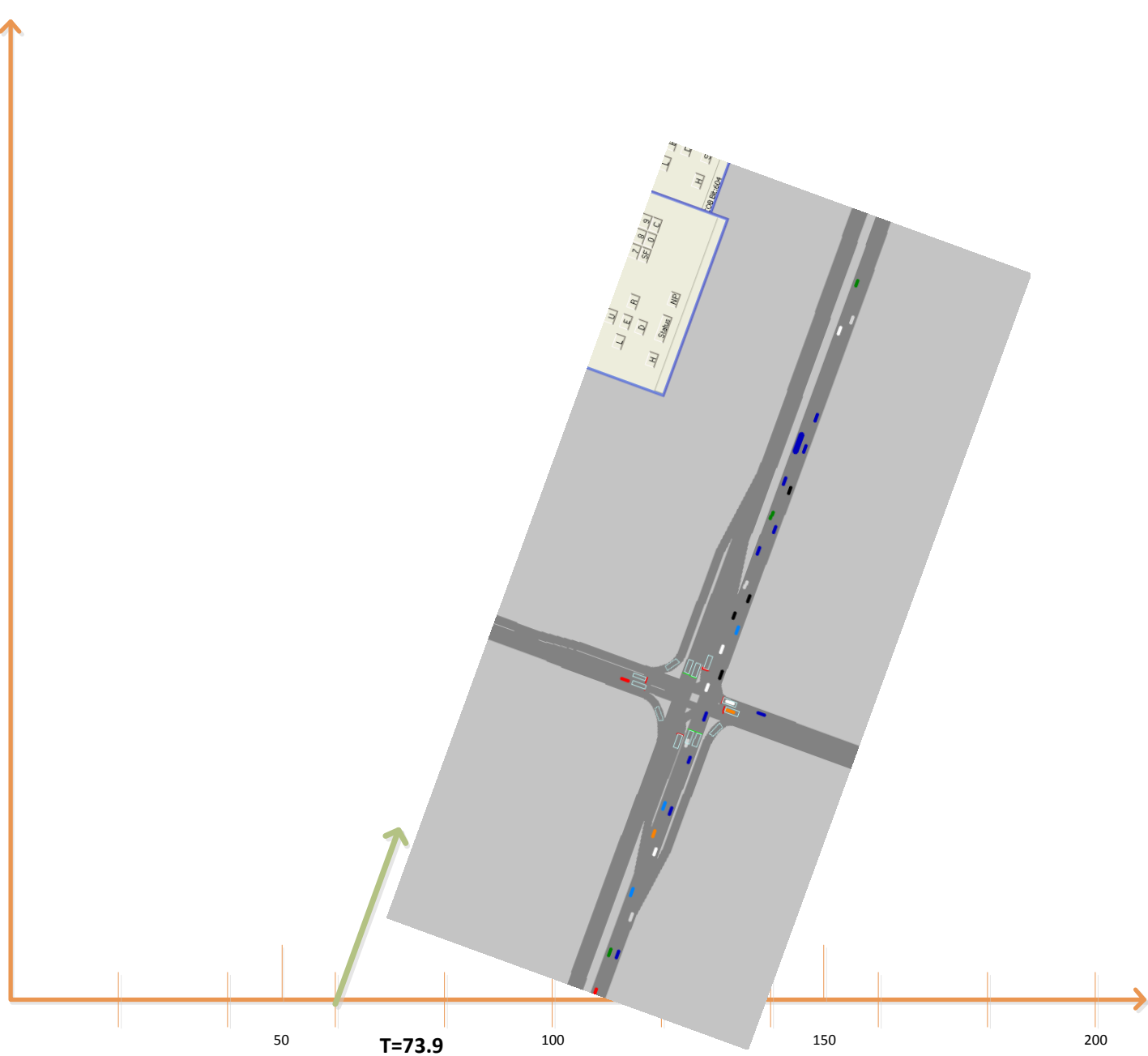
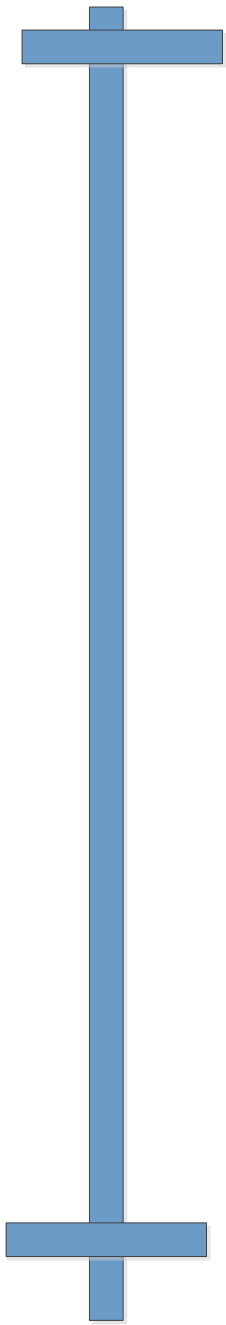
Before signal retiming After signal retiming

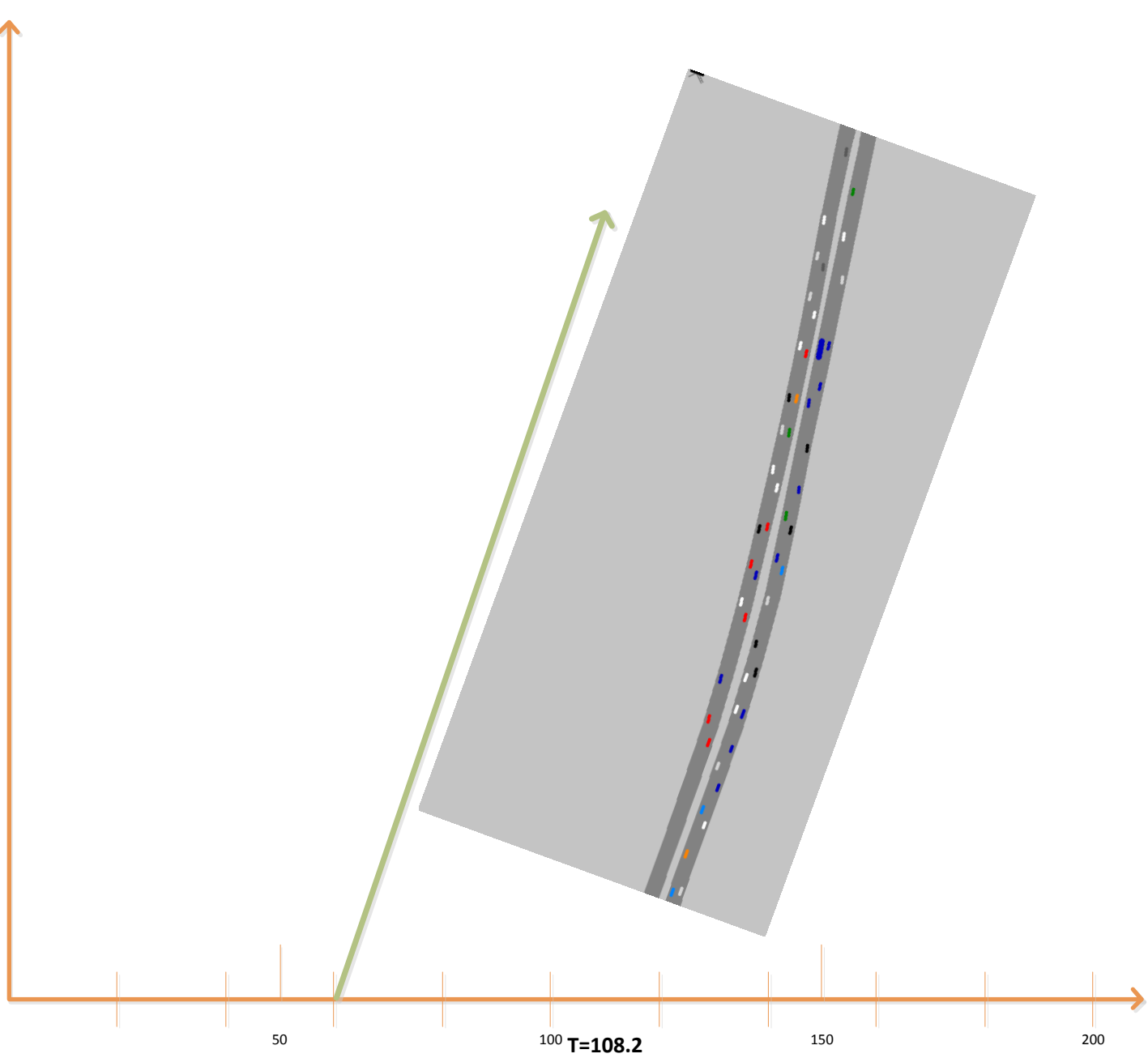
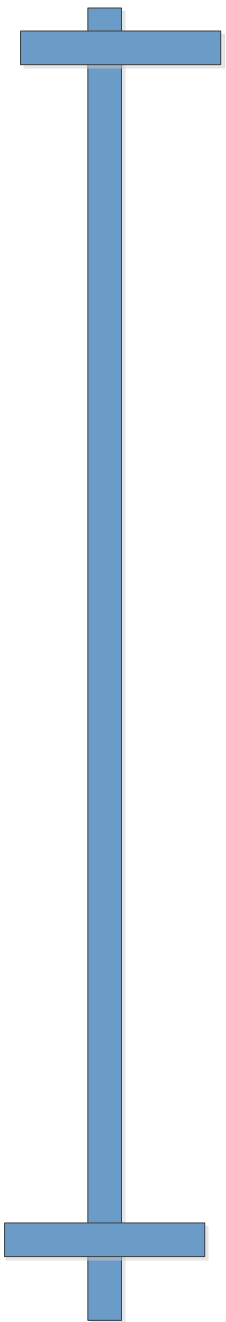
00:04:13:11 00:04:13:05

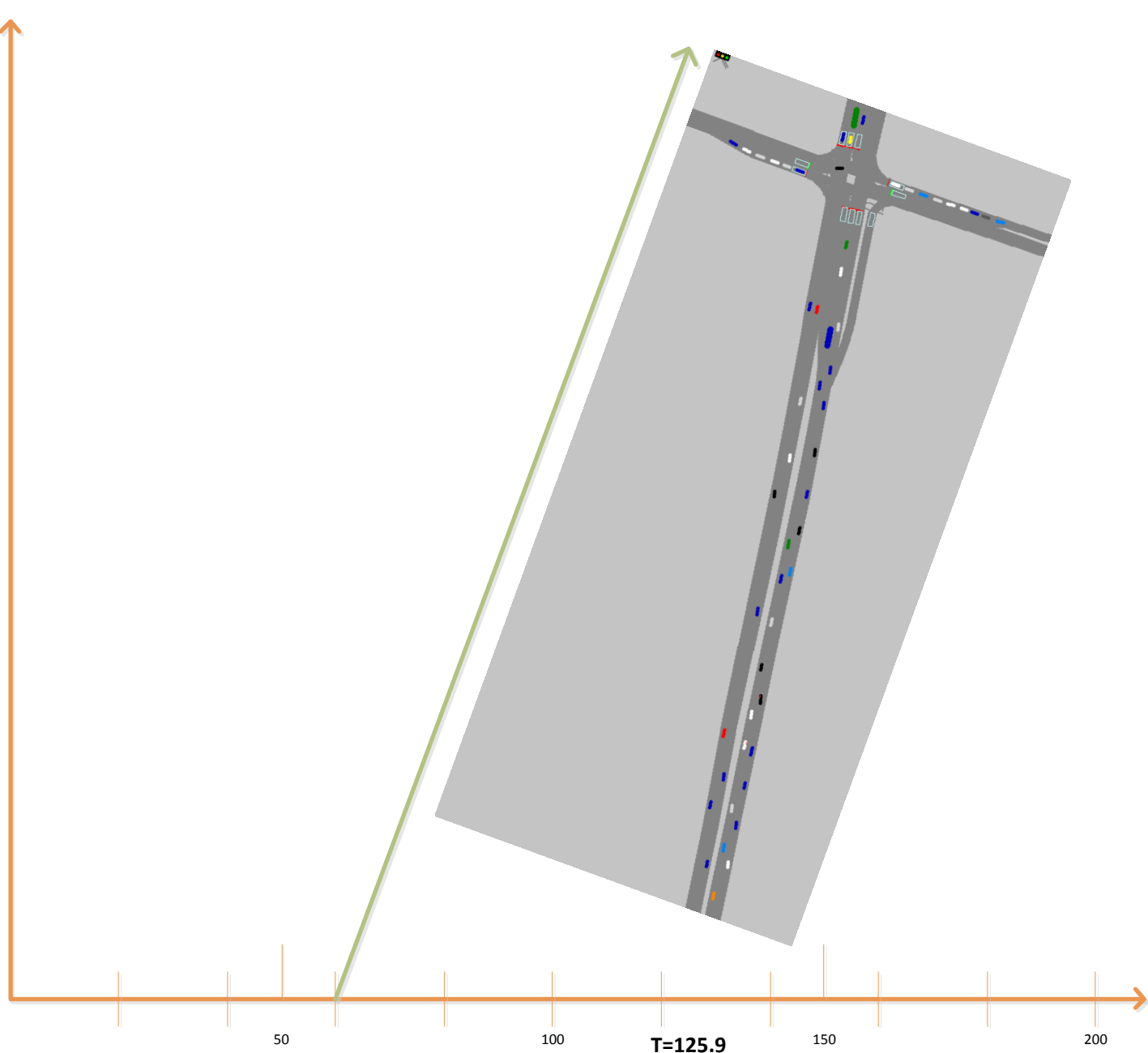
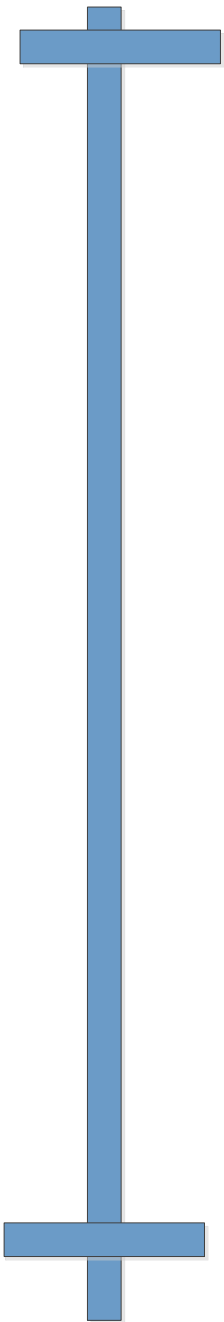
START FINISH

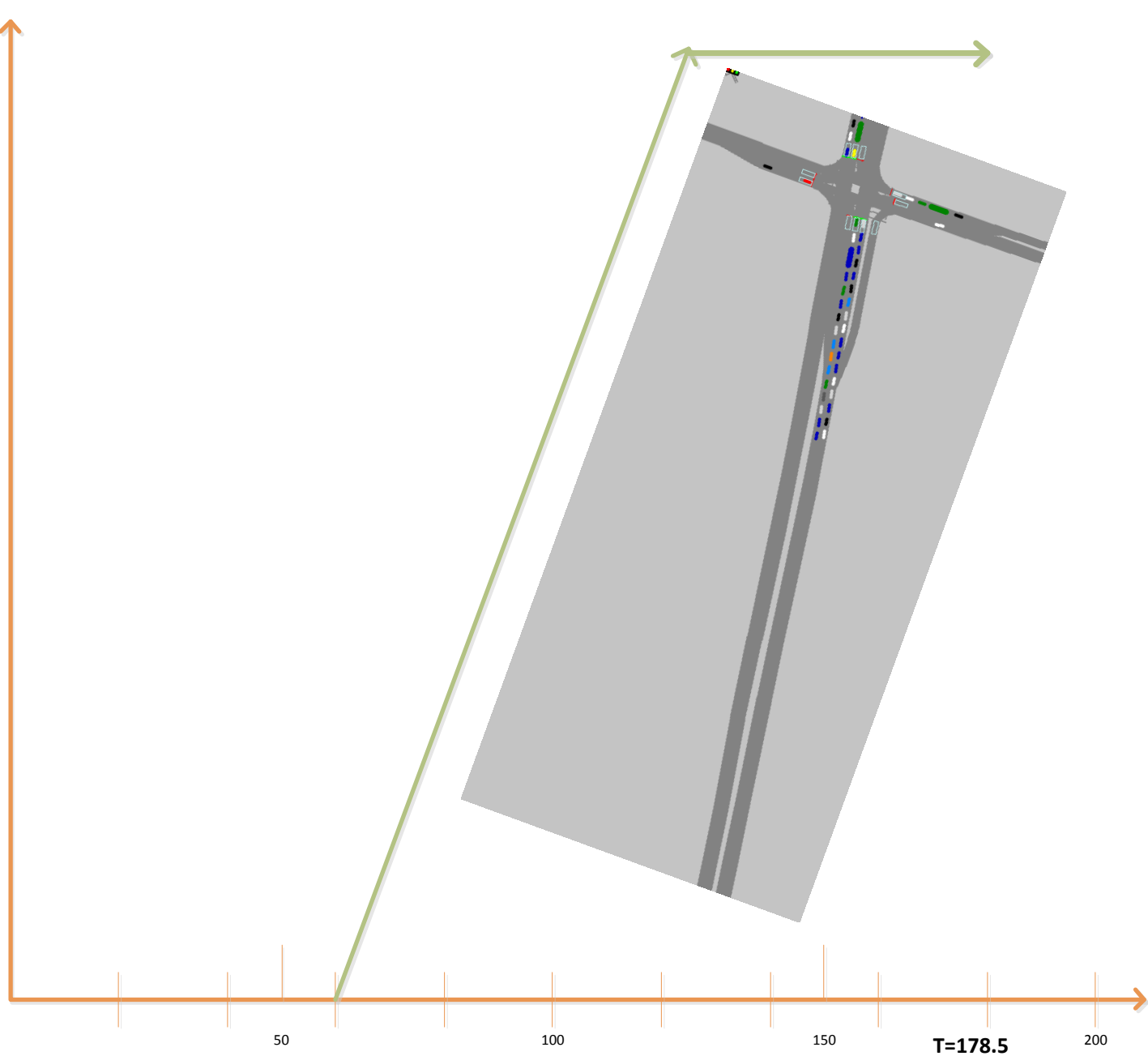
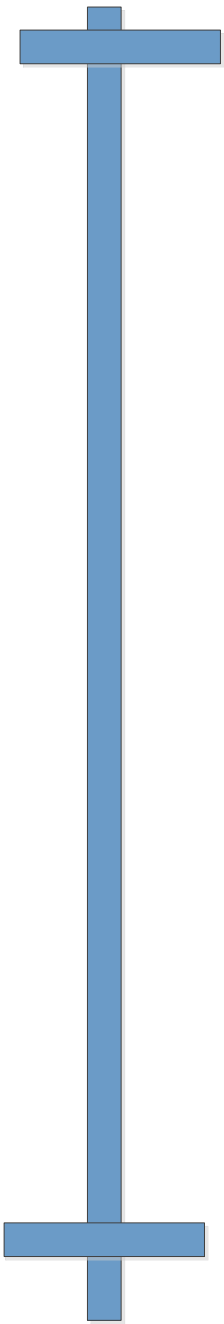








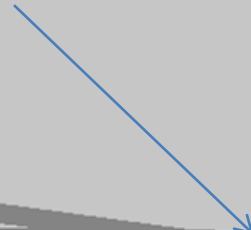




Arrivals

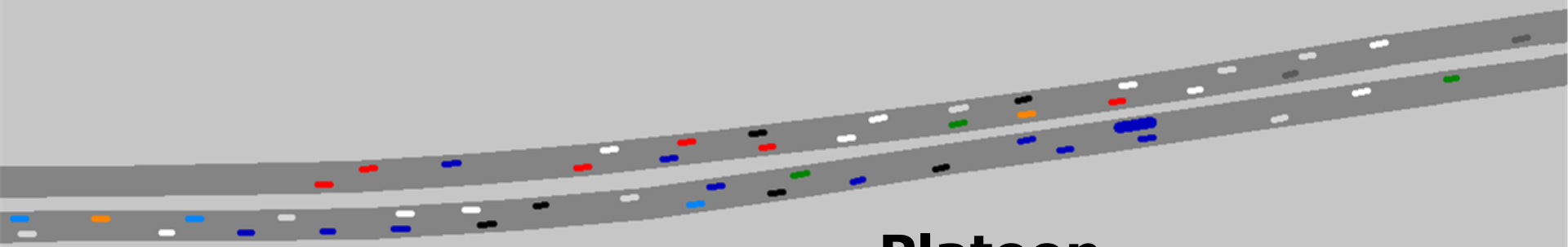


Departures



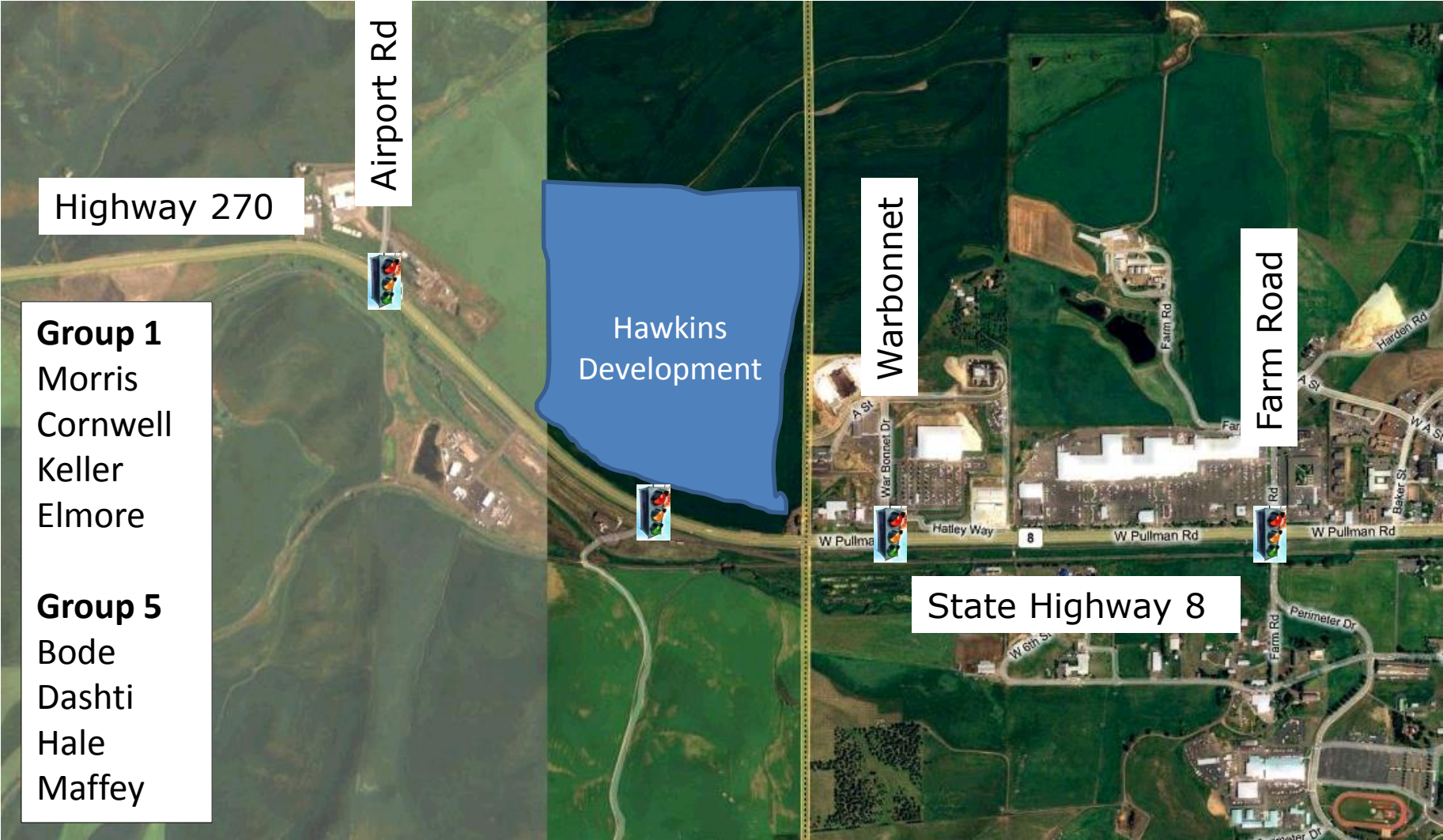
U	7	8	9
L	E	R	SF 0 C
D			
H	Status	NP	

COB Bit:604



Platoon dispersion

SH8 West-1 (Network 1)



SH8 West-2 (Network 2)



- Group 2**
 - Hartzell
 - Landa
 - Lecates
 - Almakrab
- Group 6**
 - Ryu
 - Alrashdi
 - Bernauer
 - Taylor-Stiffarm

SH8 East (Network 3)



US 95 South (Network 4)



Styner/Lauder

- Group 4**
- Cupps
- Larrea
- Saras
- Skinner

- Activity C01: Intersection Spacing, Offset, and Vehicle Speed (Time-Space Diagrams)
- Activity C02 –Measuring Progression Quality – Field Observations

Activity C01

- Due tomorrow at the beginning of class
- Work in pairs
- Bring results to discuss

Intersection	Distance (ft)	Cycle length (sec)	Green (sec)	Offset (sec)	Platoon width (sec)	Speed (mi/hr)	Speed (ft/sec)	Travel Time (sec)
Ironwood	1367	100	50	0	50	35	51.3	26.6
I90W			50	26.6				
I90E	566		50	37.6		35	51.3	11.0
Appleway	448		50	46.3				
Neider	2323		50	91.4		35	51.3	45.3

Up Direction				
Intersection	Front of Platoon		Back of Platoon	
	Time	Distance	Time	Distance
1	0.0	0	50.0	0
2	26.6	1367	76.6	1367
3	37.7	1933	87.7	1933
4	46.4	2381	96.4	2381
5	91.6	4704	141.6	4704

Down Direction				
Intersection	Front of Platoon		Back of Platoon	
	Time	Distance	Time	Distance
5	91.4	4704	141.4	4704
4	136.7	2381	186.7	2381
3	145.4	1933	195.4	1933
2	156.4	1367	206.4	1367
1	183.0	0	233.0	0

Intersection	Green	Red	Green	Red
1	0	50	100	150
2	-73	-23	27	77
3	-62	-12	38	88
4	-54	-4	46	96
5	-9	41	91	141

Intersection Location		
Intersection	Distance	Distance
1	1	1
2	1367	1367
3	1933	1933
4	2381	2381
5	4704	4704

