

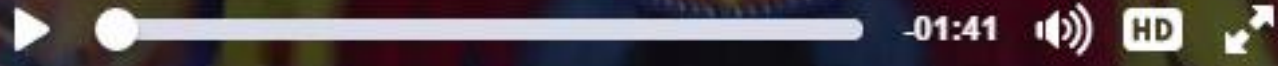
CE 474 – Class 23

October 15, 2015

MAX Orange Line Grand Opening

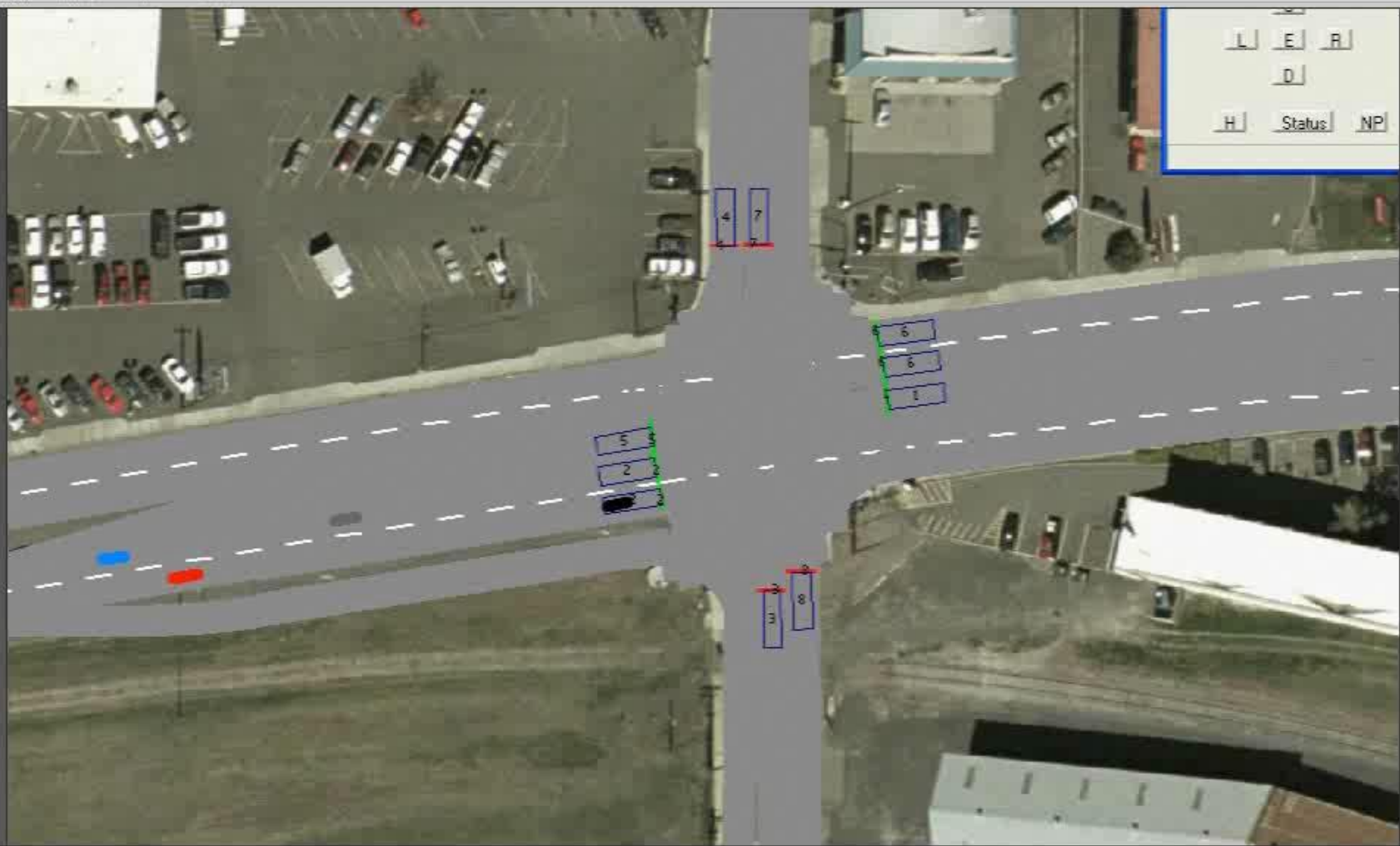
Posted by TriMet

1,851 Views

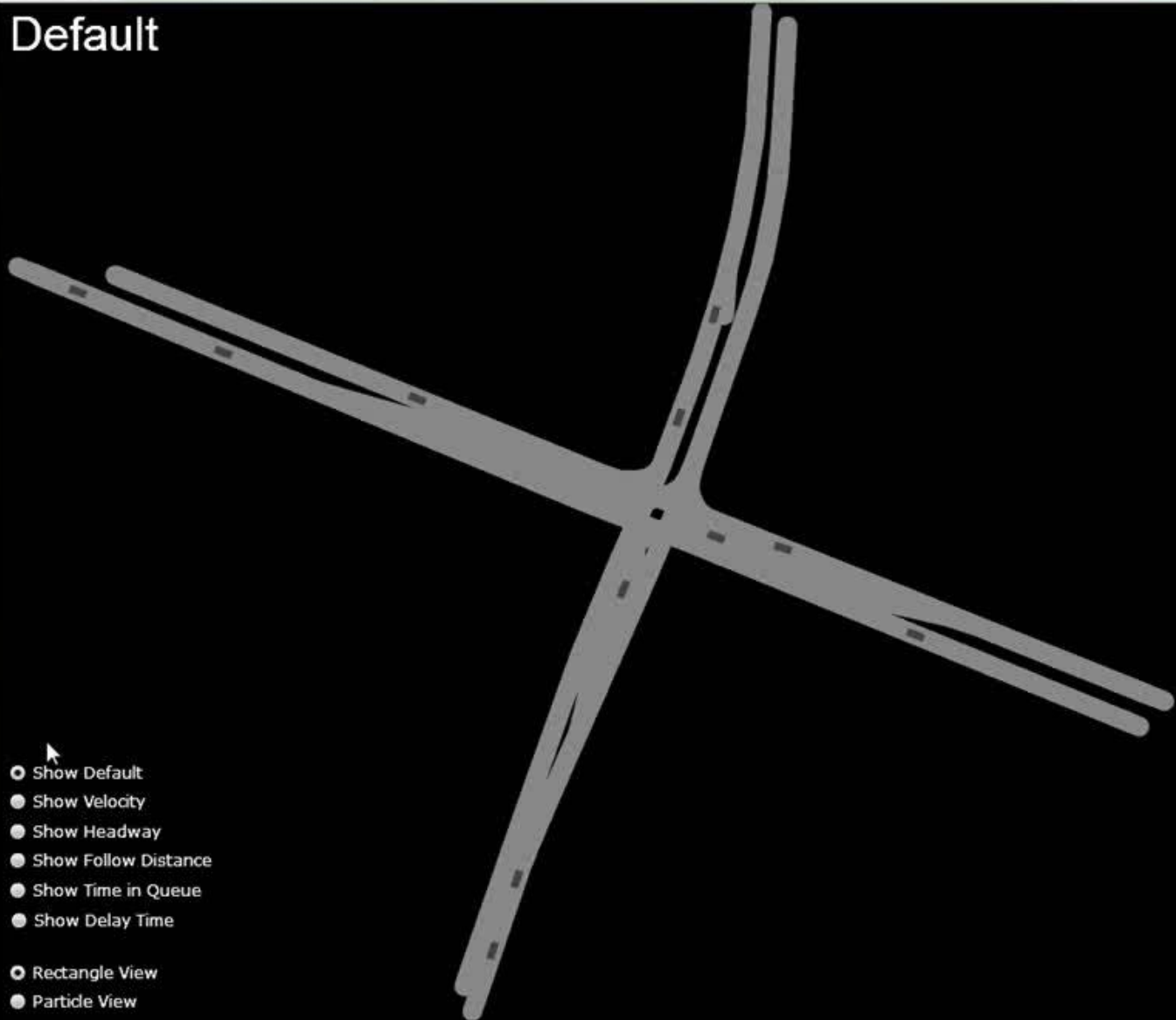


History Graph
Pan Video
Zoom In
Zoom Out

Presentation Mode



Default



- Show Default
- Show Velocity
- Show Headway
- Show Follow Distance
- Show Time in Queue
- Show Delay Time

- Rectangle View
- Partide View

- Timer Enabled

Sample Rate: 0.05 s.

Velocity



- Show Default
- Show Velocity
- Show Headway
- Show Follow Distance
- Show Time in Queue
- Show Delay Time

- Rectangle View
- Partide View

Timer Enabled

Sample Rate: 0.05 s.

8

Class 21 (10.12)

Discuss: A43 results
Mini-lecture/CTQ: A45

Class 22 (10.14)

Do/Discuss: A47, A48, A49
Homework (due 10.15):

- Prepare: A50

Class 23 (10.15)

Do/Discuss: A50 (due 10.19)
Do: A50-Revised
Homework (due 10.19):

- Read: Chapter 9 overview
- Read: A52
- Do A52 CTQ
- Read chapter 4, K&T

9

Class 24 (10.19)

Mini-lecture/CTQ: A52
Field prep: A55

Class 25 (10.21)

[Field work: no class meeting]
Do: A55 (field) (due 10.22)
Homework (due 10.22):

- Prepare: A54, A56

Class 26 (11.22)

Preview: A62
Preview: Exam #1
Discuss: A55
Do/Discuss: A54, A56 (due 10.26)
Homework (due 10.26):

- Read: Chapter 10 overview
- Read: A58
- Preview: A59

10

Class 27 (10.26)

Mini-lecture: A58
Do: A59
Do: A62
Homework (due 10.29):

- Complete: A62

Class 28 (10.28)

Exam #1

Class 29 (10.29)

Do: Report, presentation, oral examination



Note: A50-Revised

After you've completed simulation runs for selected LT treatment (A50), prepare and complete another simulation run with the minimum green time set at 5 sec. Gather the performance table (queue length, delay) into a spreadsheet and submit as A50-Revised.