

# CE 474 – Class 15

September 28, 2015

## Next time...

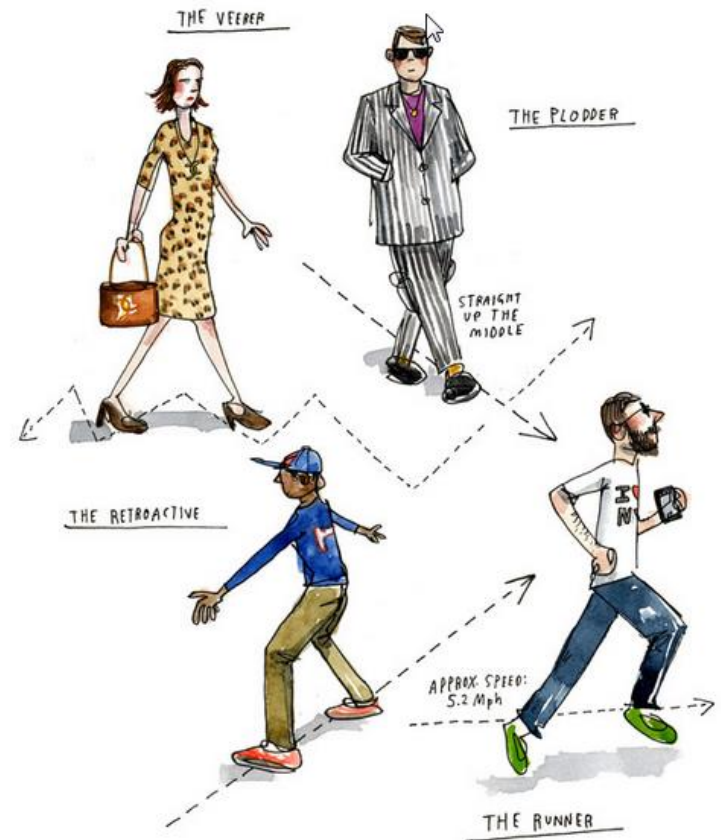
- Complete A31
  - CTQ, T1, T2
  - to BBLearn by Wednesday, 200 pm
  - Team of 2
- Preview/prepare for following activities:
  - A32
  - A33
  - A34
  - A35

<http://www.brainpickings.org/index.php/2013/09/26/jaywalkers-wendy-macnaughton-1924/>

Titled “**The Confusion of Our Sidewalkers: And the Traffic Problem of the Future in the Erratic Pedestrian,**” the original 1924 article by M. B. Levick presages the urban density of our present and examines it through the eyes of an imagined Uncle Jay Walker, a sort of patron saint of sidewalk orderliness and pedestrian manners. Levick writes:

“ The speeding and erratic pedestrian is a problem of the present but nothing is but thinking makes it so and the town has not come to realize it yet. Envisage the Manhattan of distant aeons — say 1926, after the fashion of popular prophecy — and the picture shows motors by the million, of bizarre design, closely packed but orderly and docile to semaphores on roadways, sunken, raised, suspended or maintained by radio. In this picture the pedestrians file as orderly as a column of troops along Utopian footways. But what of reality then — and now? The question is not of the jaywalker, but of the master anarchist in all his varieties (and hers), who is creating new and ineluctable hazards in the process of getting from place to place. Here is a problem that has been only touched upon by the “Keep Moving” signs along Fifth Avenue.

## JAYWALKERS of NEW YORK



ACTIVITY  
**28**

# Building a Simulation Model Network



ACTIVITY  
**28**

# Building a Simulation Model Network

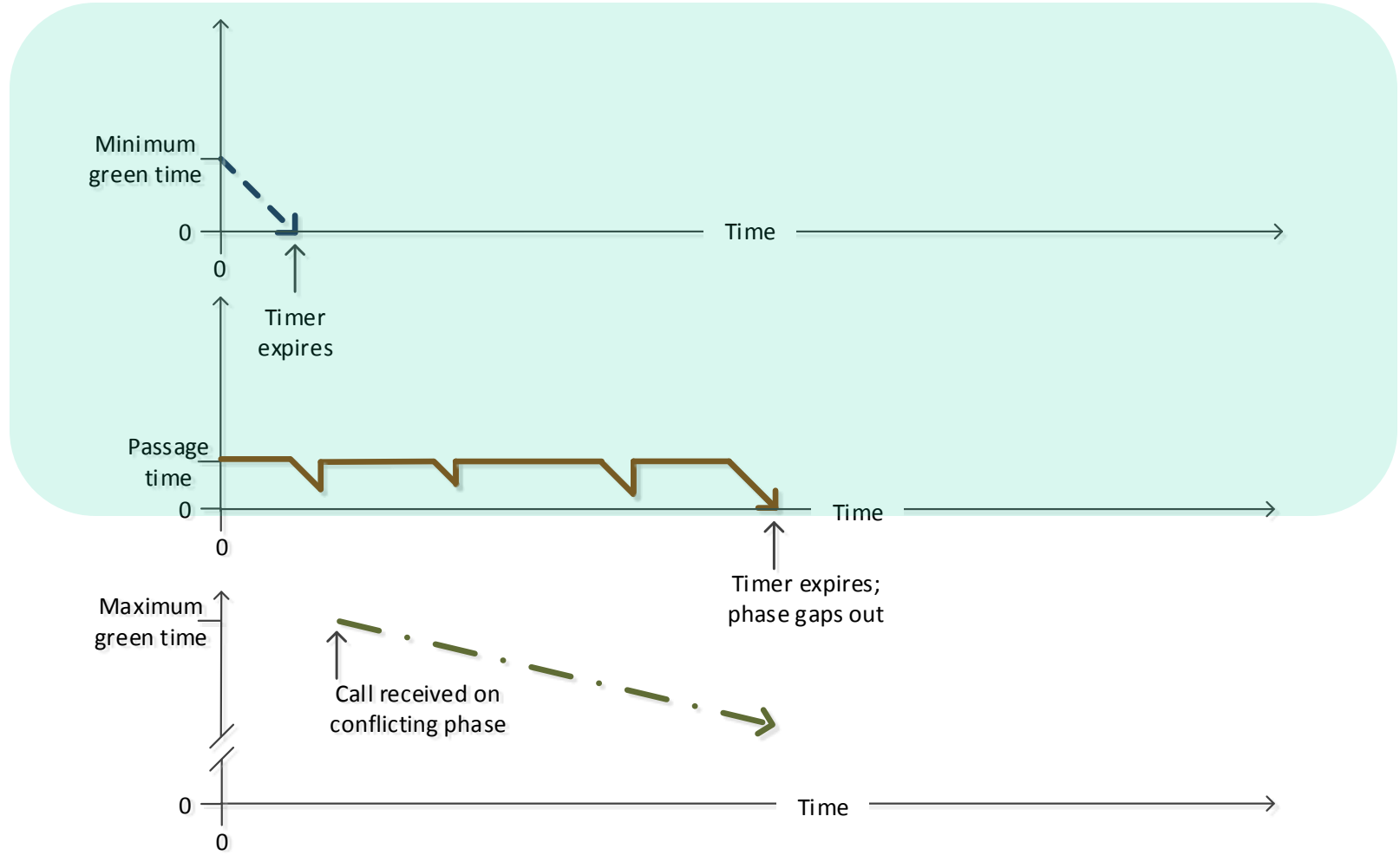




- Review results from your evaluation data files
- Review notes from observation of animation
- Identify traffic problems, both qualitative and quantitative
- Prepare answers to CTQ 1 and 2 from A28
- Brief class presentations
- Submit Word document summarizing your work (titled: A28 supplement w/names) to BBLearn by 500 pm today

***Examples:***

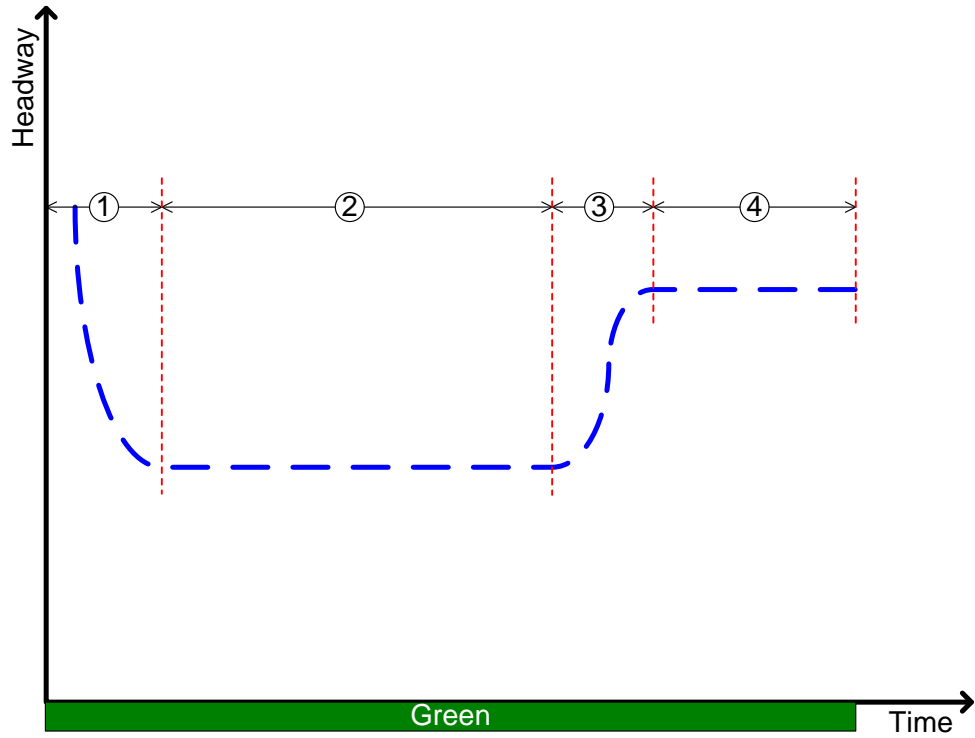
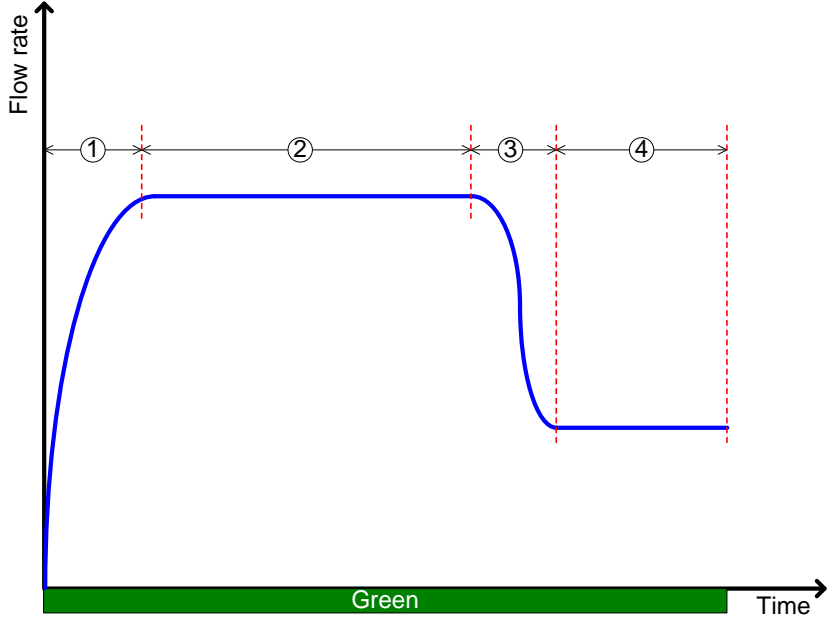
- *NBLT movement spills back into through lane*
- *Queue doesn't clear before the end of green*
- *Through movement blocks left turn lane and vehicles*
- *Delay exceeds 80 seconds per vehicle*
- *Queue length of 150 feet exceeds available storage space of 100 feet*

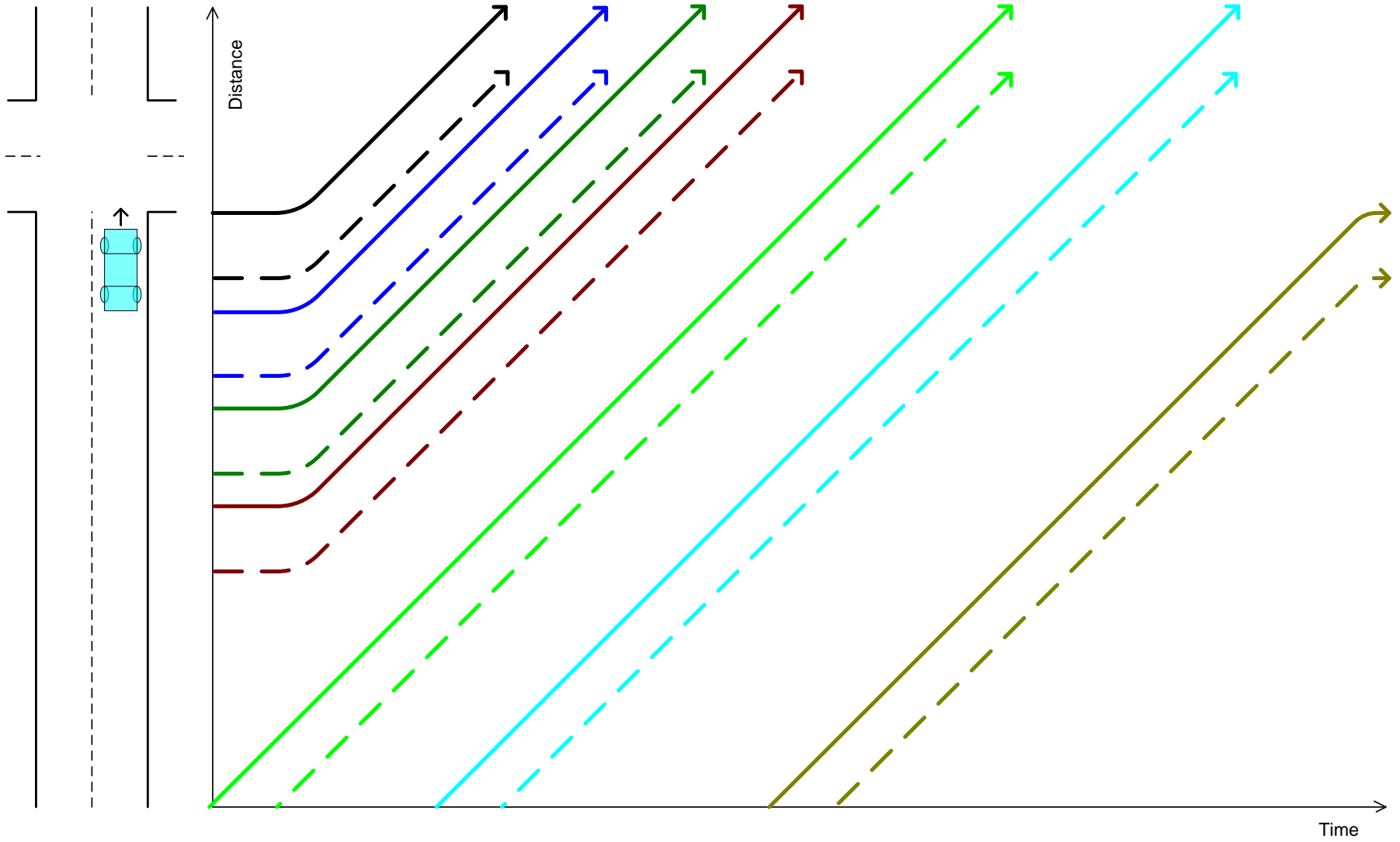




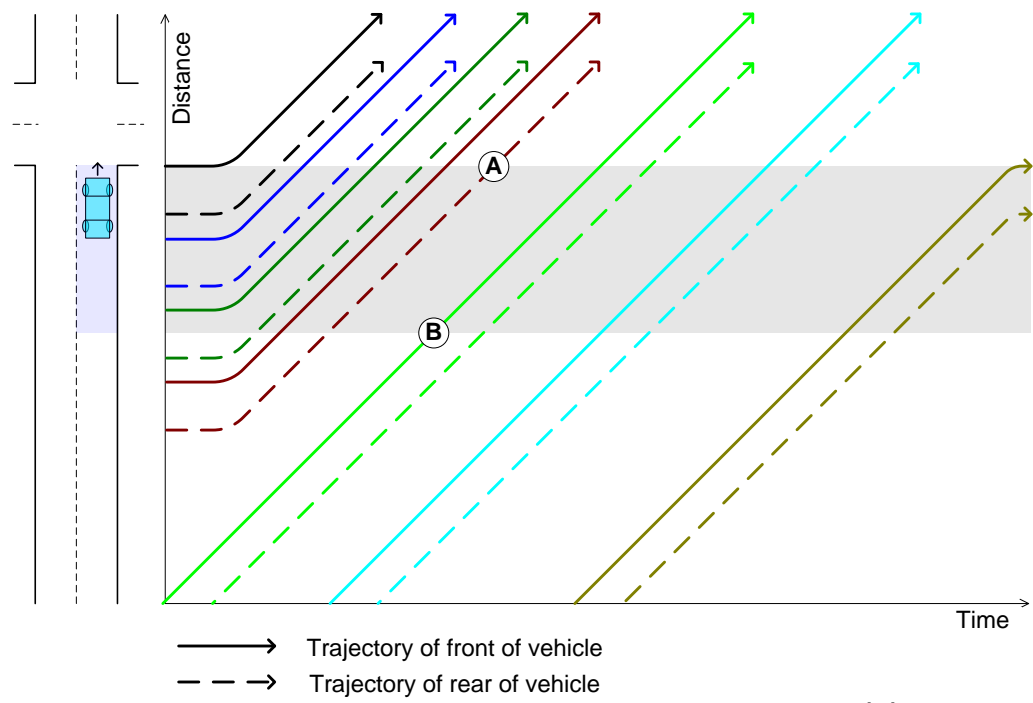
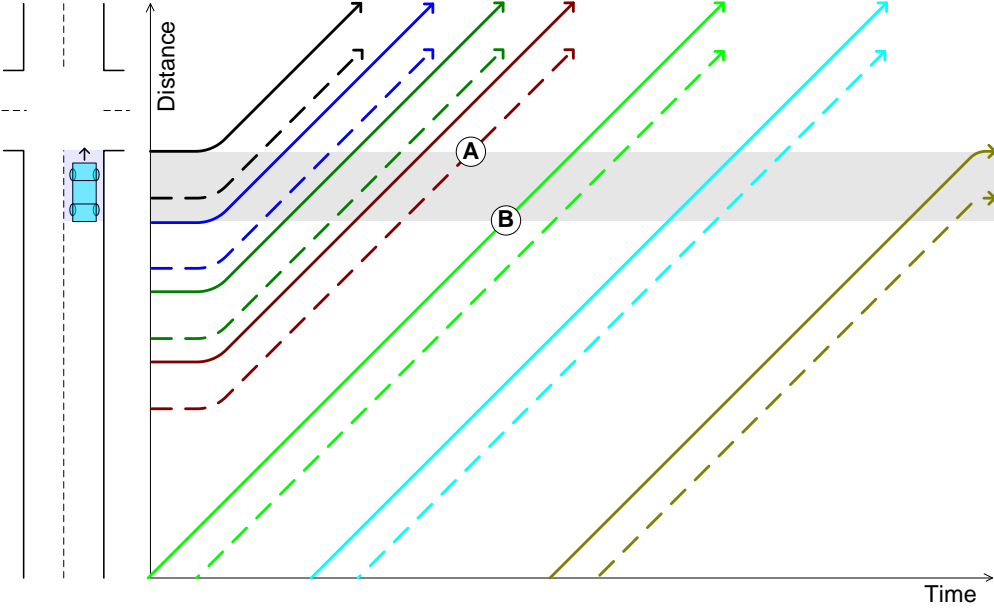
- Understand principles in setting detection zone length, passage time, and minimum green time.
  - Guidance from manuals
  - Basic model of phase operation
  - Analytical and graphical relationships
  - The realities

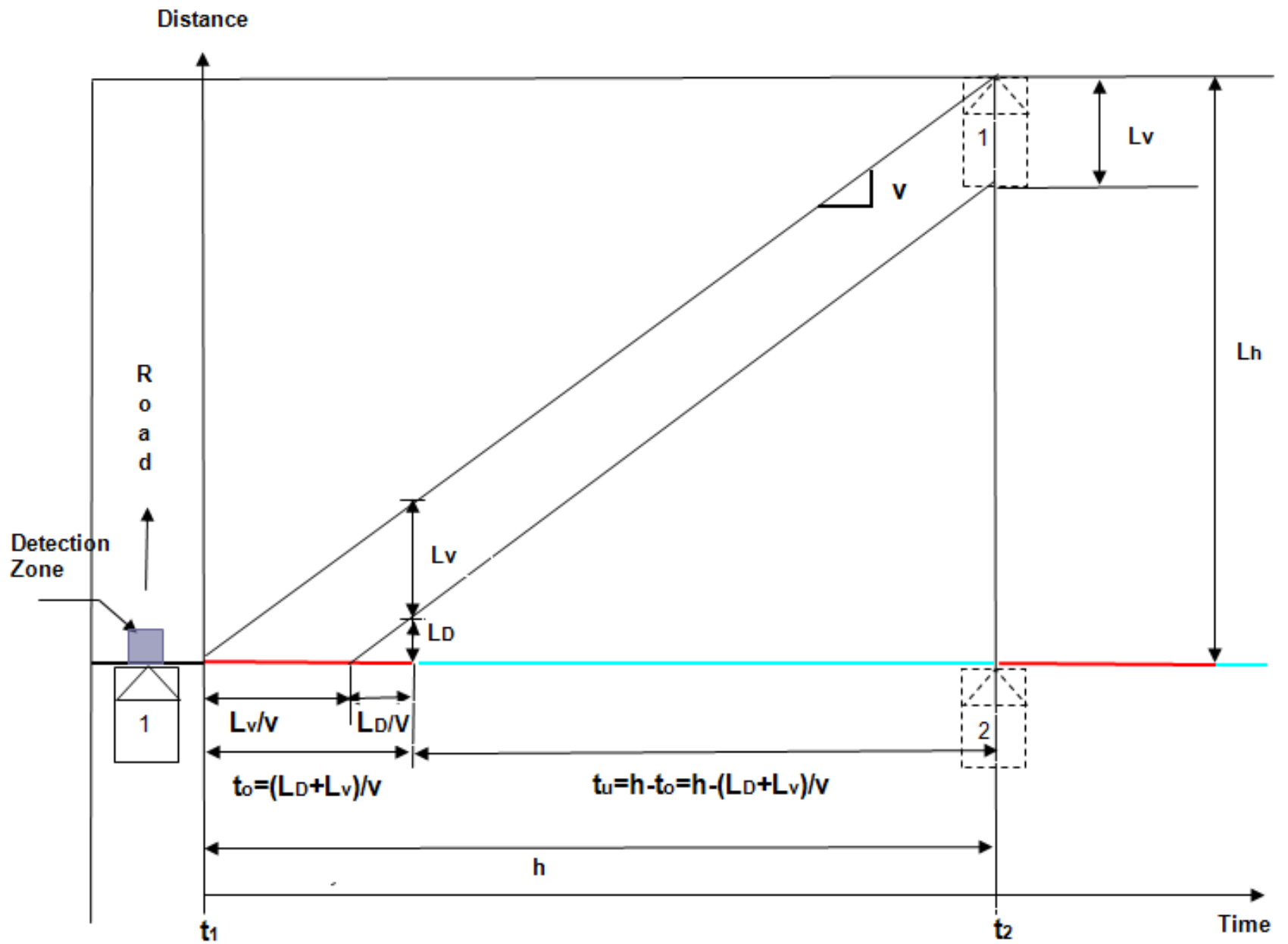






- Trajectory of front of vehicle
- - -→ Trajectory of rear of vehicle



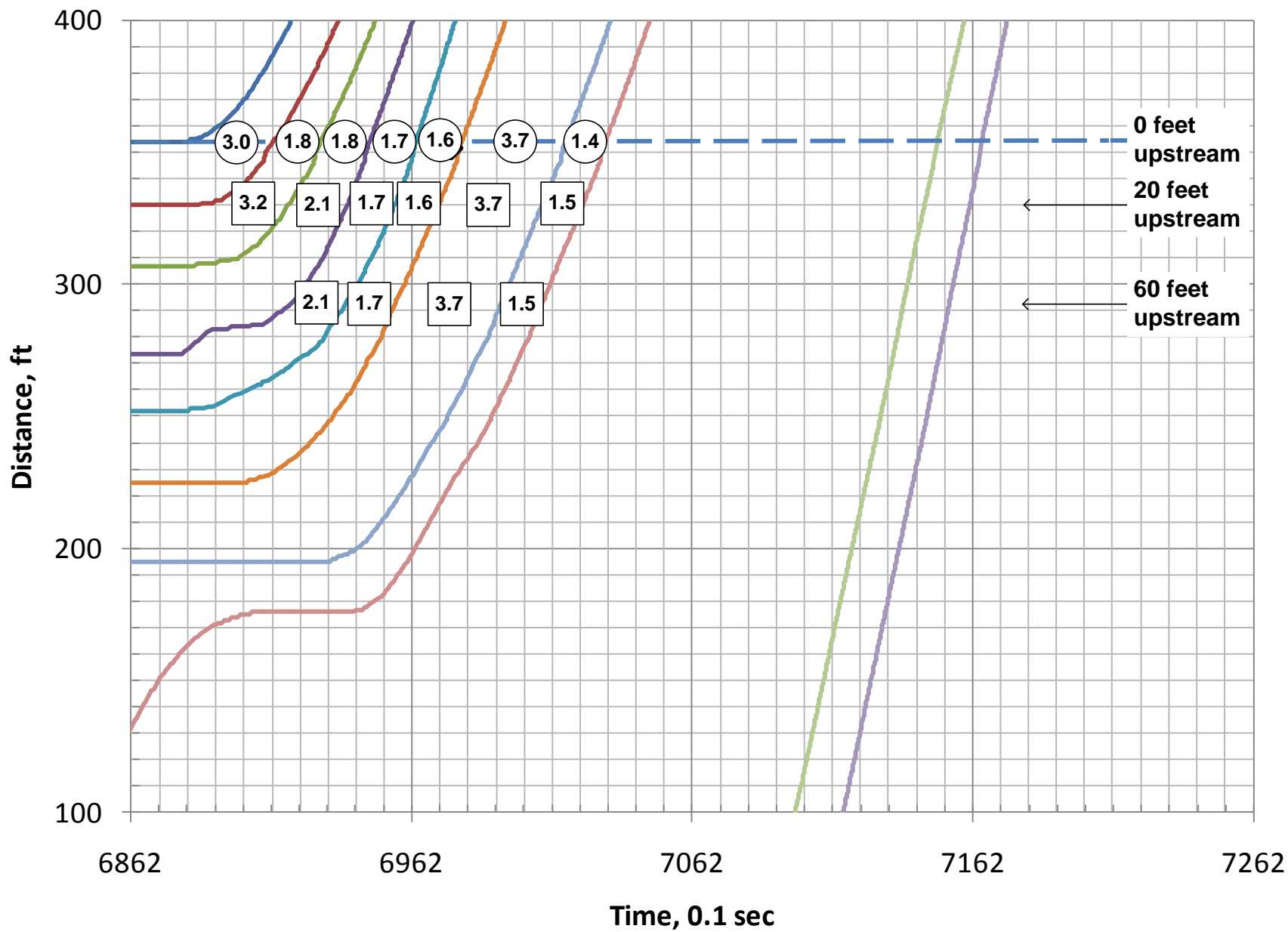


- Team of 2
- CTQ
- Tasks 1 and 2

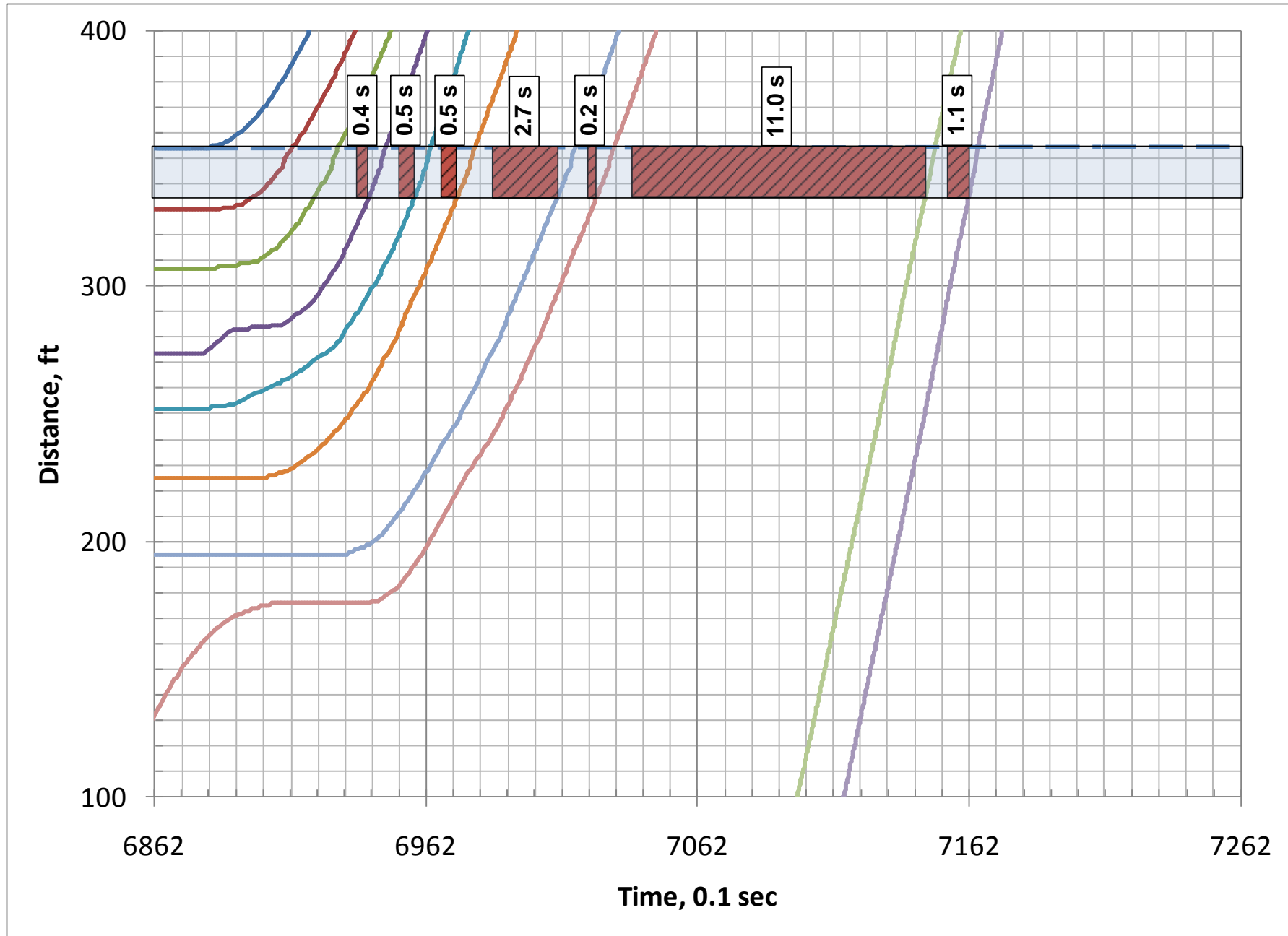
## Next time...

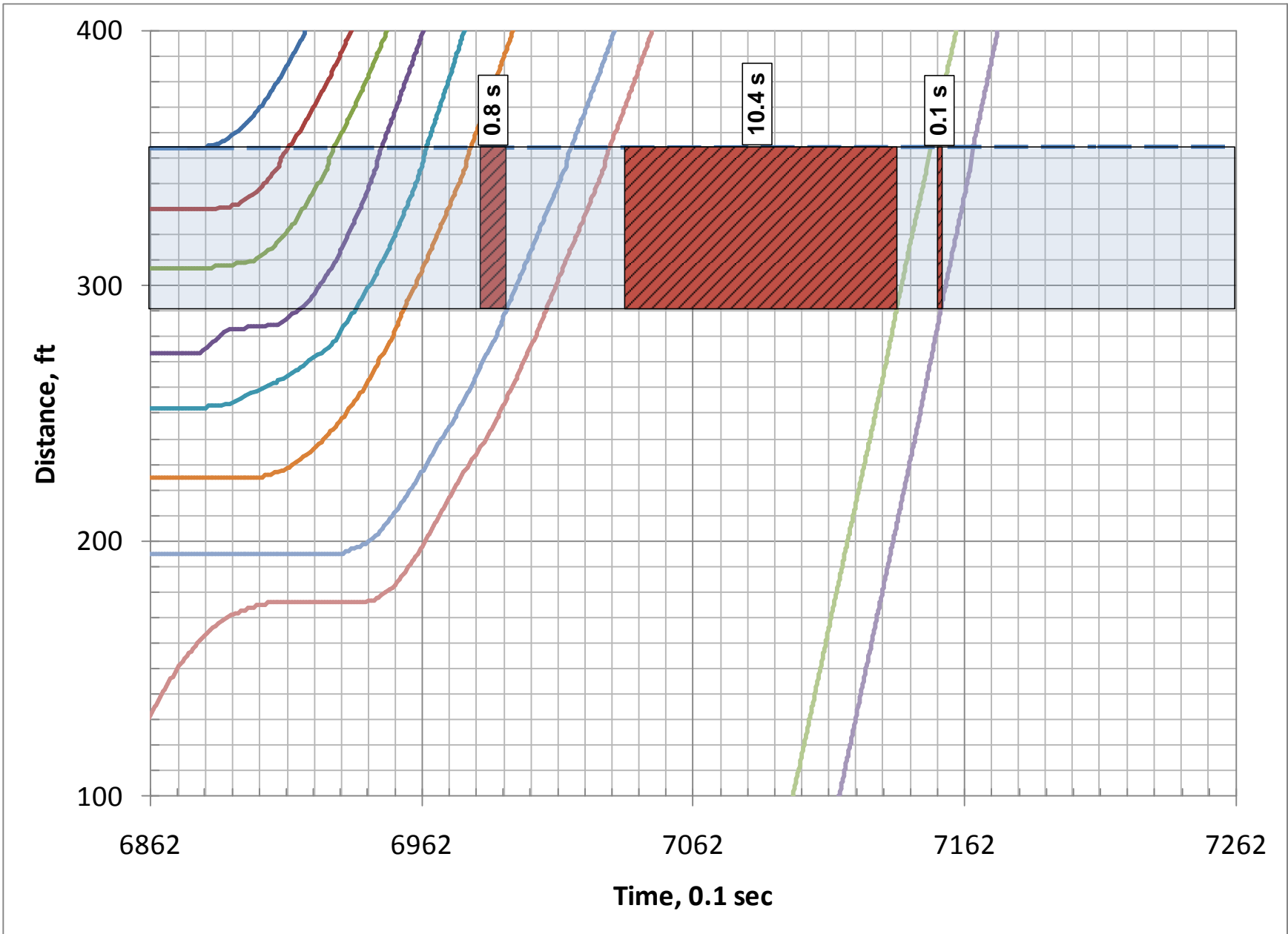
- Complete A31
  - CTQ, T1, T2
  - to BBLearn by Wednesday, 200 pm)
  - Team of 2
- Preview/prepare for following activities:
  - A32
  - A33
  - A34
  - A35

Unused slides...



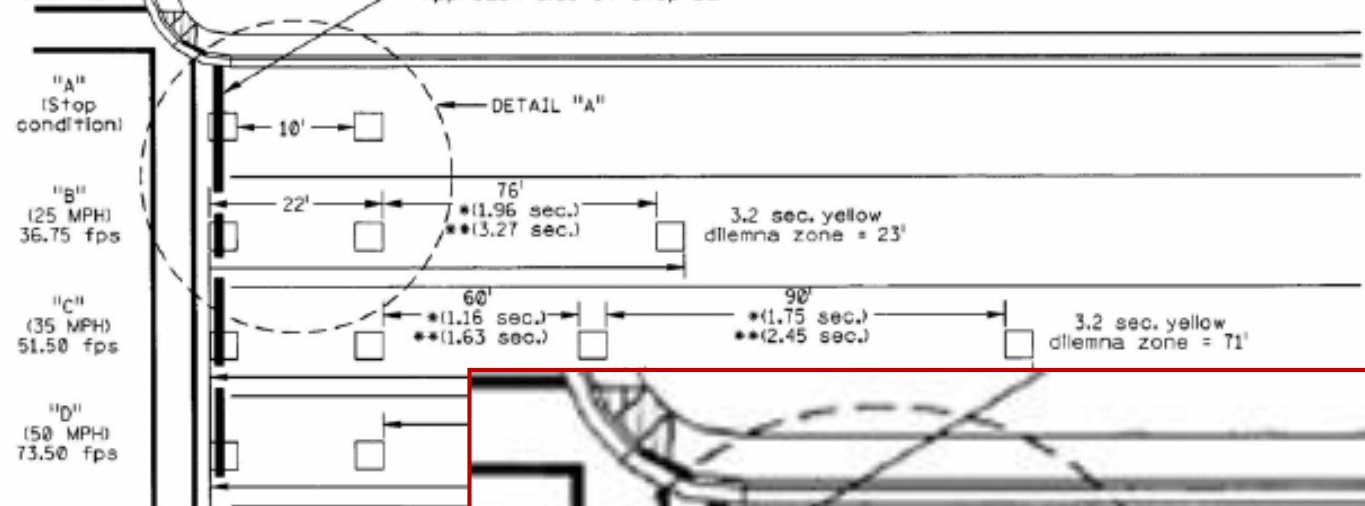






# LOOP DETECTOR SPACING PLAN

LOOP PLAN



DETAIL "A"

